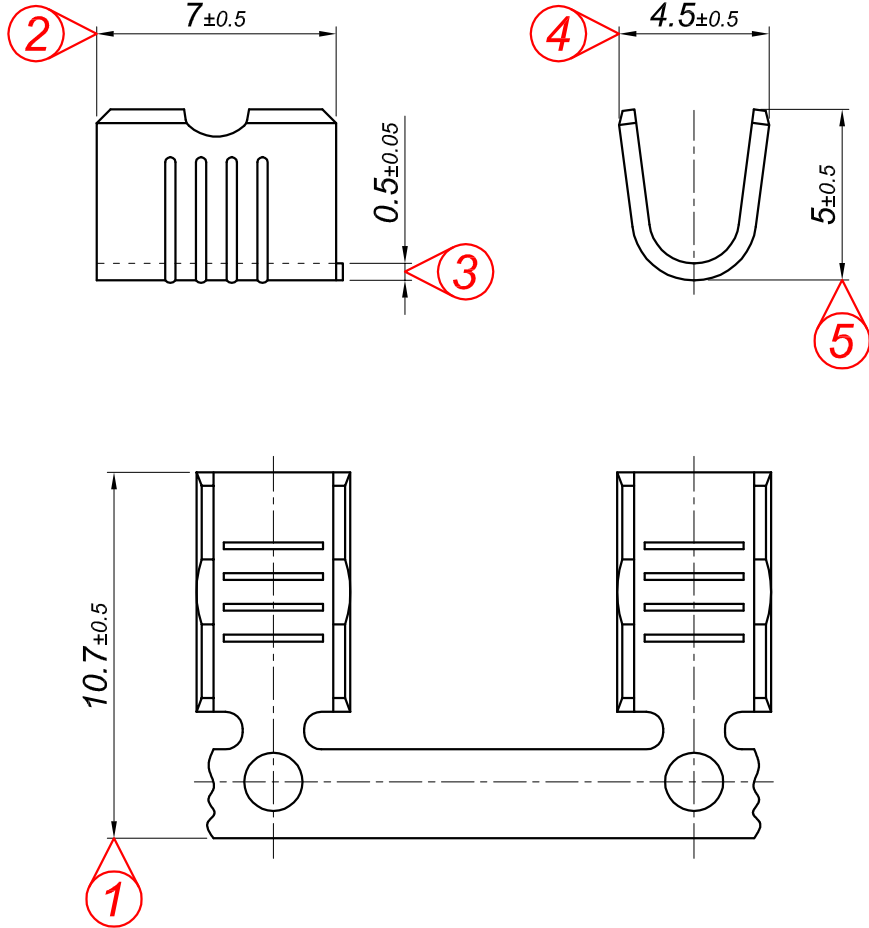
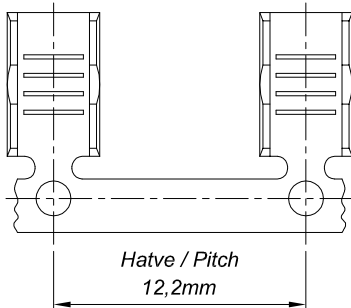


| PARÇA KODU PART CODE | PARÇA ADI PART NAME | s ÖLÇÜSÜ (KALINLIK) s MEASURE (THICKNESS) | Malzeme Material | Kaplama / Coating | | |
|-------------------------|---------------------------------|--|-------------------------|-------------------|----|----|
| | | | | SN | AG | Ni |
| TEK 2857 RP | EK UCU (C11) =RP= | ----- | (CuZn30) Pirinç / Brass | - | - | - |
| TEK 2857 RPK | EK UCU (C11) =RPK= | ----- | (CuZn30) Pirinç / Brass | + | - | - |
| TEK 2857 RPT | EK UCU (C11) (ters sarım) =RP= | ----- | (CuZn30) Pirinç / Brass | - | - | - |
| TEK 2857 RPKT | EK UCU (C11) (ters sarım) =RPK= | ----- | (CuZn30) Pirinç / Brass | + | - | - |



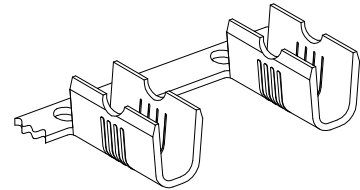
Kalıp çıkış yönü
Mold output direction

Makara açılım yönü
Reel opening direction




Hatve / Pitch
12,2mm

Ölçek
Scale : 3 / 1



Kablo Kesiti
Wire Section : 1.5 - 5 mm²

Resmin Üzerinden Ölçü Almayınız
Don't use the drawing for measuring purpose

| | | | | | |
|---|-------------------------|------------------|---------------|--------------------------|-----------------------|
| Tarih / Date | 27.11.2013 | İmza / Signature | Ölçek / Scale | | |
| Çizen / Desing | M.Yağcı | | 5 / 1 | | |
| Onay / Approval | S.Gölcük | | | No | Değişiklik / Revision |
|  | Parça Adı: Part Name | EK UCU (C11) | | Parça Kodu: Part Code | TEK 2857 |